

6428 BIRCHCREEK



ZICKA  
H O M E S

## Loveland, Ohio

Beautiful Newberry plan with expansive front porch facing a Cul De Sac street. First floor flex room and second floor loft. Finished lower level with large windows. Wooded setting.

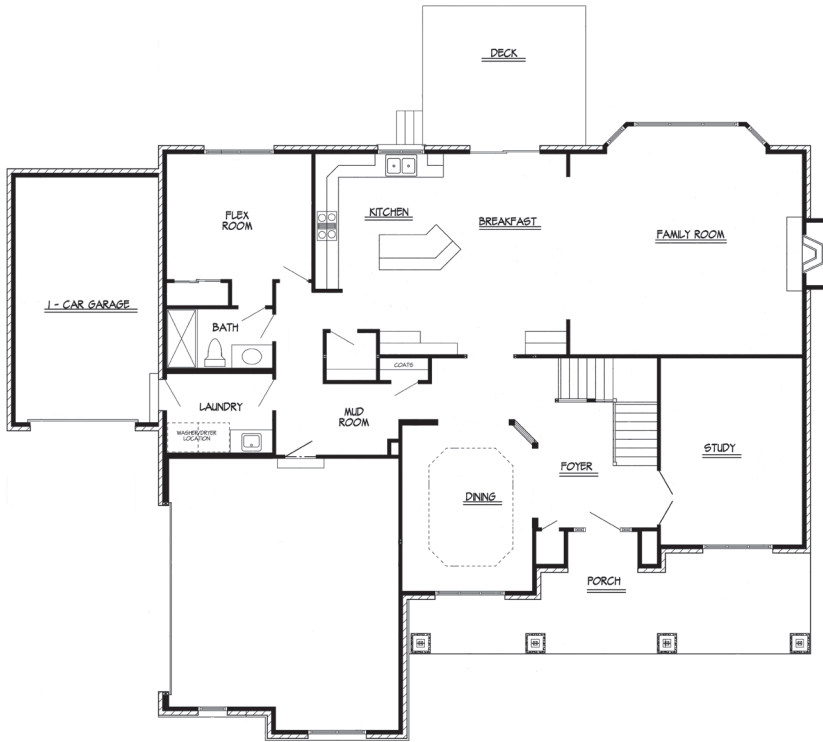
**MLS#1582955 / \$869,900**

### FEATURES:

- Approximately 3475 square feet
- Large mudroom
- First floor flex room with full bath
- Large master with 2 walk in closets
- Loft
- 3 Car garage
- Porch

**ZICKA**  
H O M E S

# 6428 BIRCHCREEK

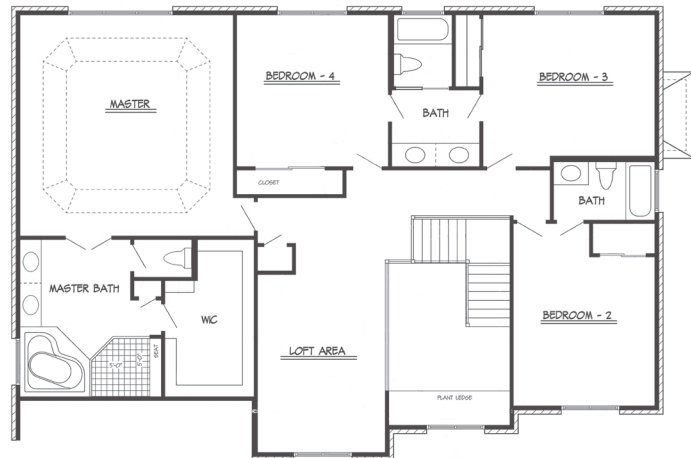


## FIRST FLOOR:

- Great Room / 20x20
- Dining / 14x11
- Kitchen & Nook / 21-7x17-3
- Study / 16x12
- Flex Room / 12-5x11

## SECOND FLOOR:

- Master / 19x18
- Bed 2 / 12x14
- Bed 3 / 15x12
- Bed 4 / 13x13



513.247.3500  
 ZickaHomes.com  
 7861 East Kemper Road  
 Cincinnati, Ohio 45249

© Zicka Homes Ltd. 2018  
 This brochure is for illustration only  
 and is not part of a legal contract.  
 All dimensions are approximate.

